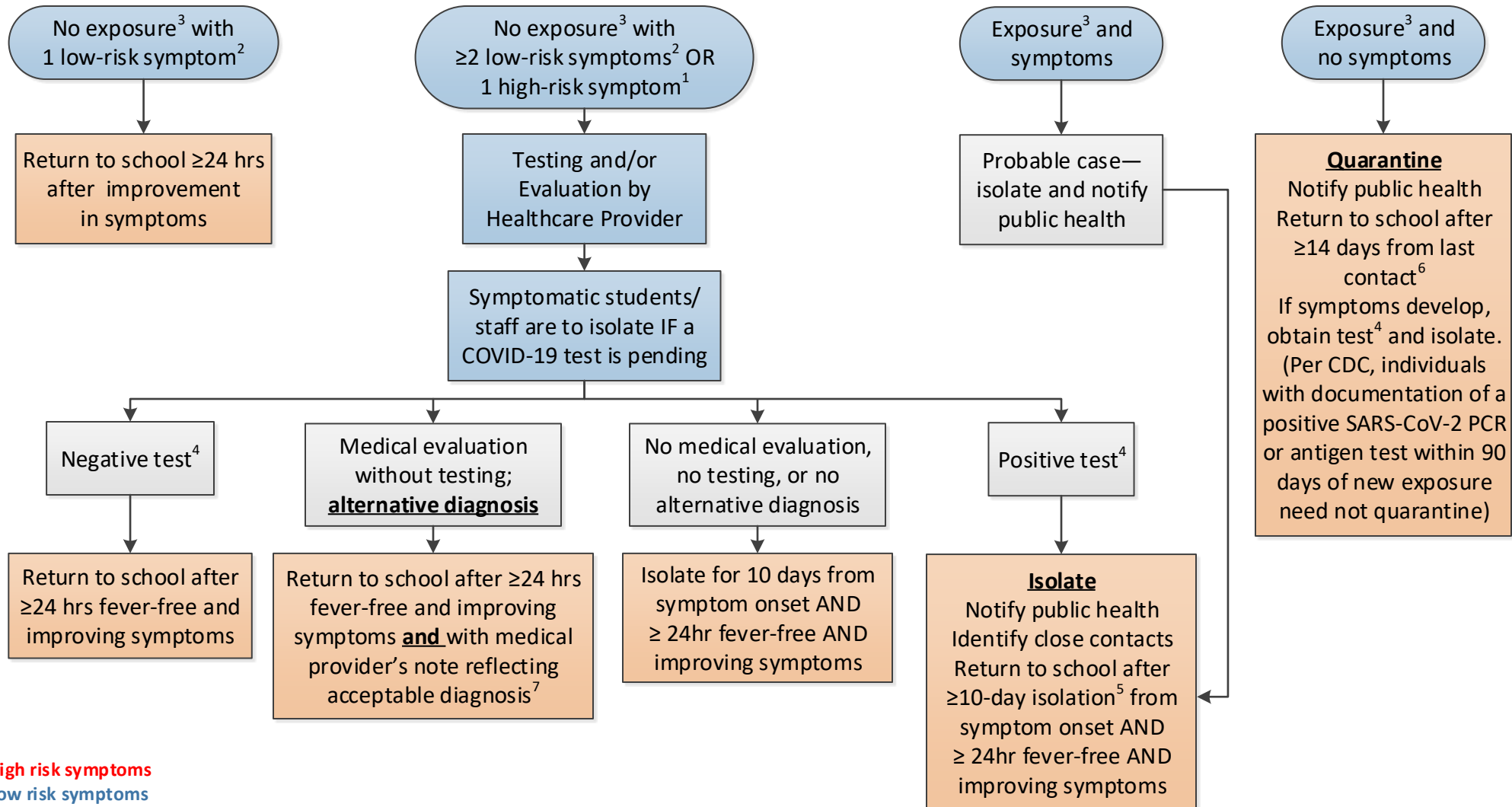


Public Health COVID-19 Return to School Decision Support Algorithm – Symptoms of COVID-19 include the following: **new cough, difficulty breathing, loss of taste or smell, fever (>100.4°F)¹, chills, congestion/runny nose, nausea/vomiting, diarrhea, sore throat, headache, myalgia, fatigue²**



¹High risk symptoms

²Low risk symptoms

³Exposure defined as within 6 feet of a case for ≥15 minutes.

⁴"Test" refers to SARS-CoV-2 PCR. Negative antigen or antibody tests are not approved for return to school.

⁵Consult CDC guidance if severely ill or immunocompromised.

⁶Consult CDC guidance if household contact.

⁷Examples of acceptable diagnoses would include fever due to urinary tract infection, strep throat confirmed by a positive strep test, rash from poison ivy, etc. Diagnoses of respiratory and viral conditions such as allergic rhinitis, seasonal allergies, upper respiratory tract infection (URI), pneumonia, pharyngitis without positive strep test, viral illness, etc., **DO NOT** exclude the diagnosis of COVID-19 and **DO NOT justify return to school.**